

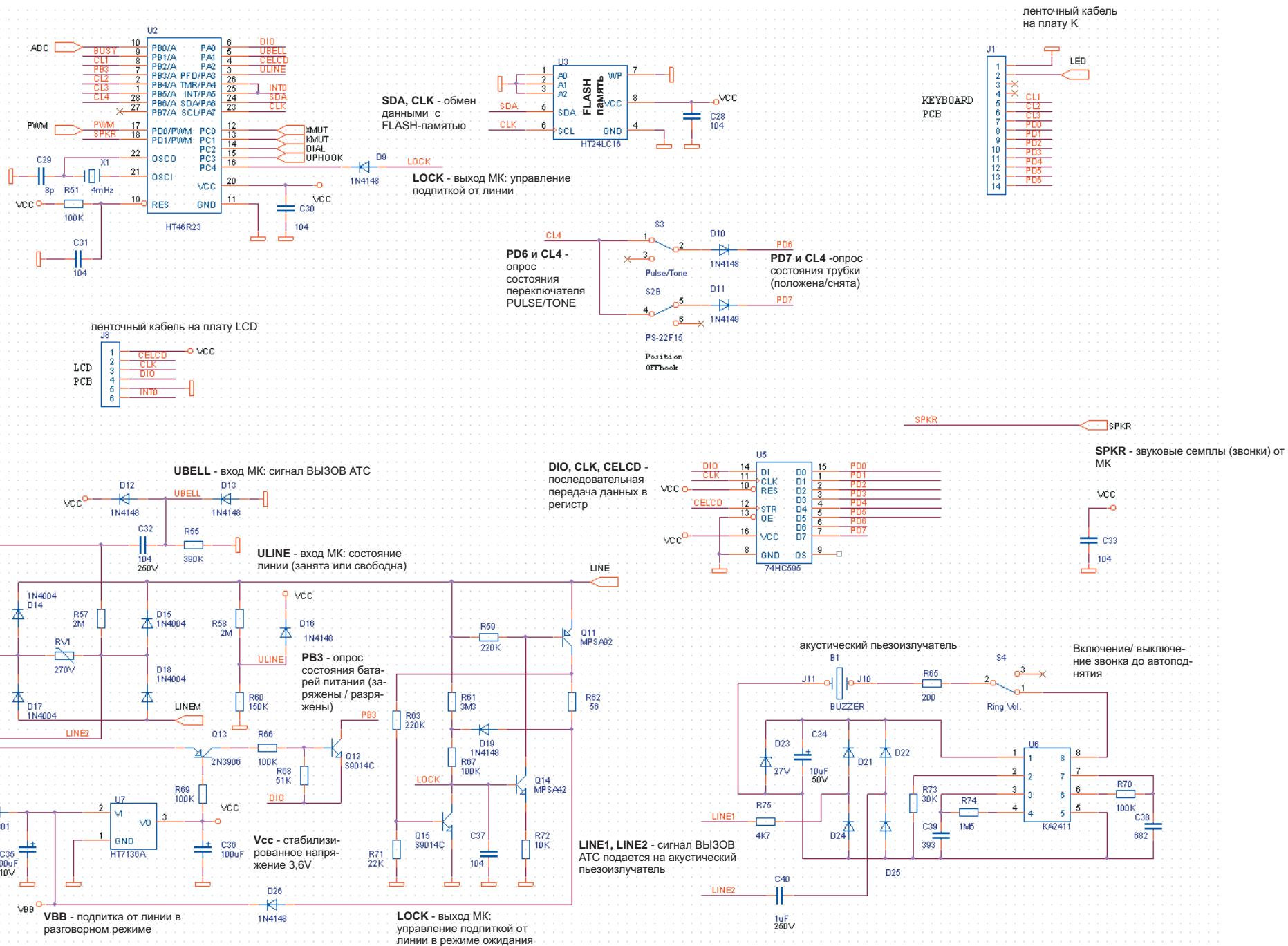


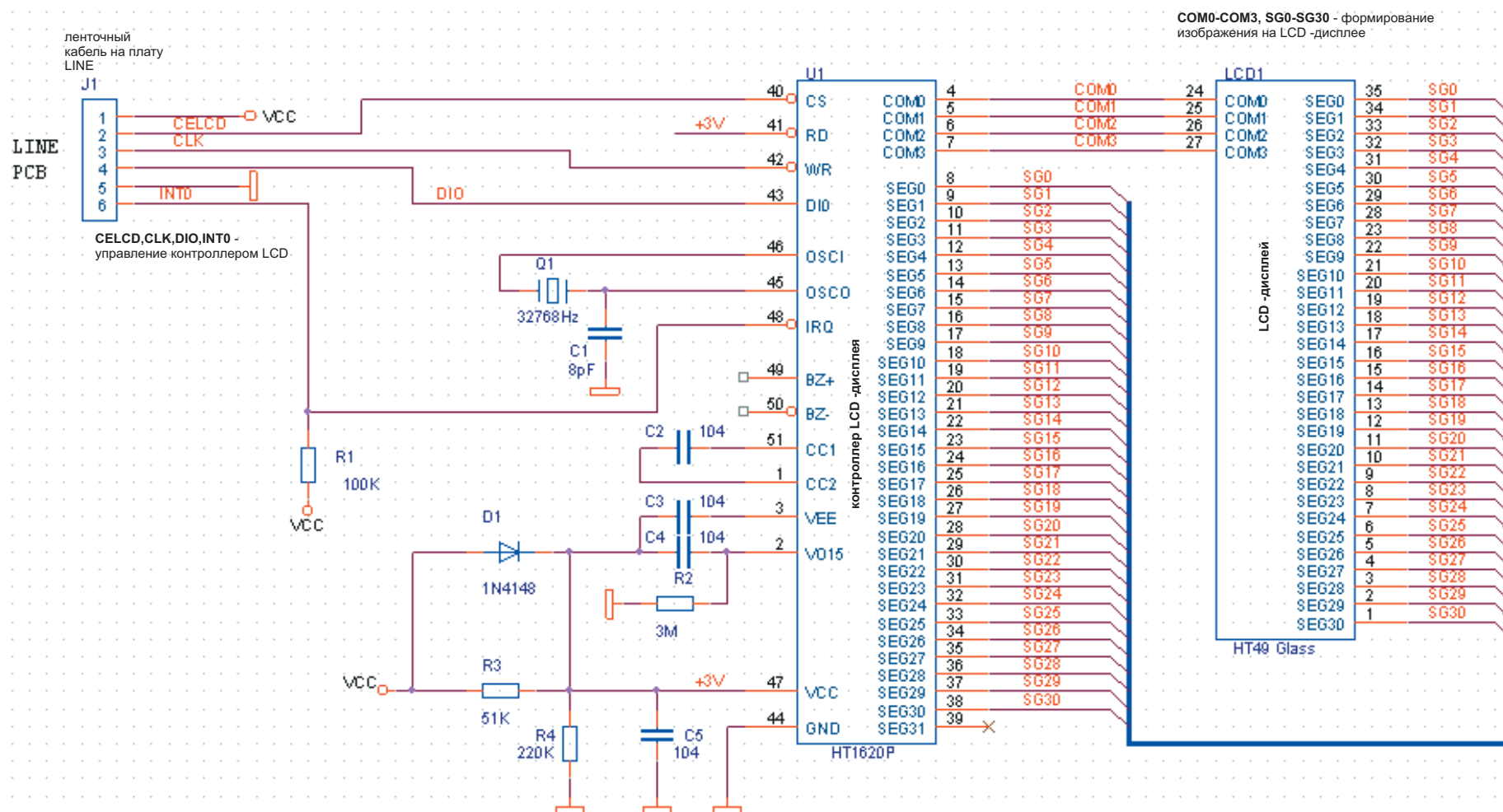
TDX-601S V. 04

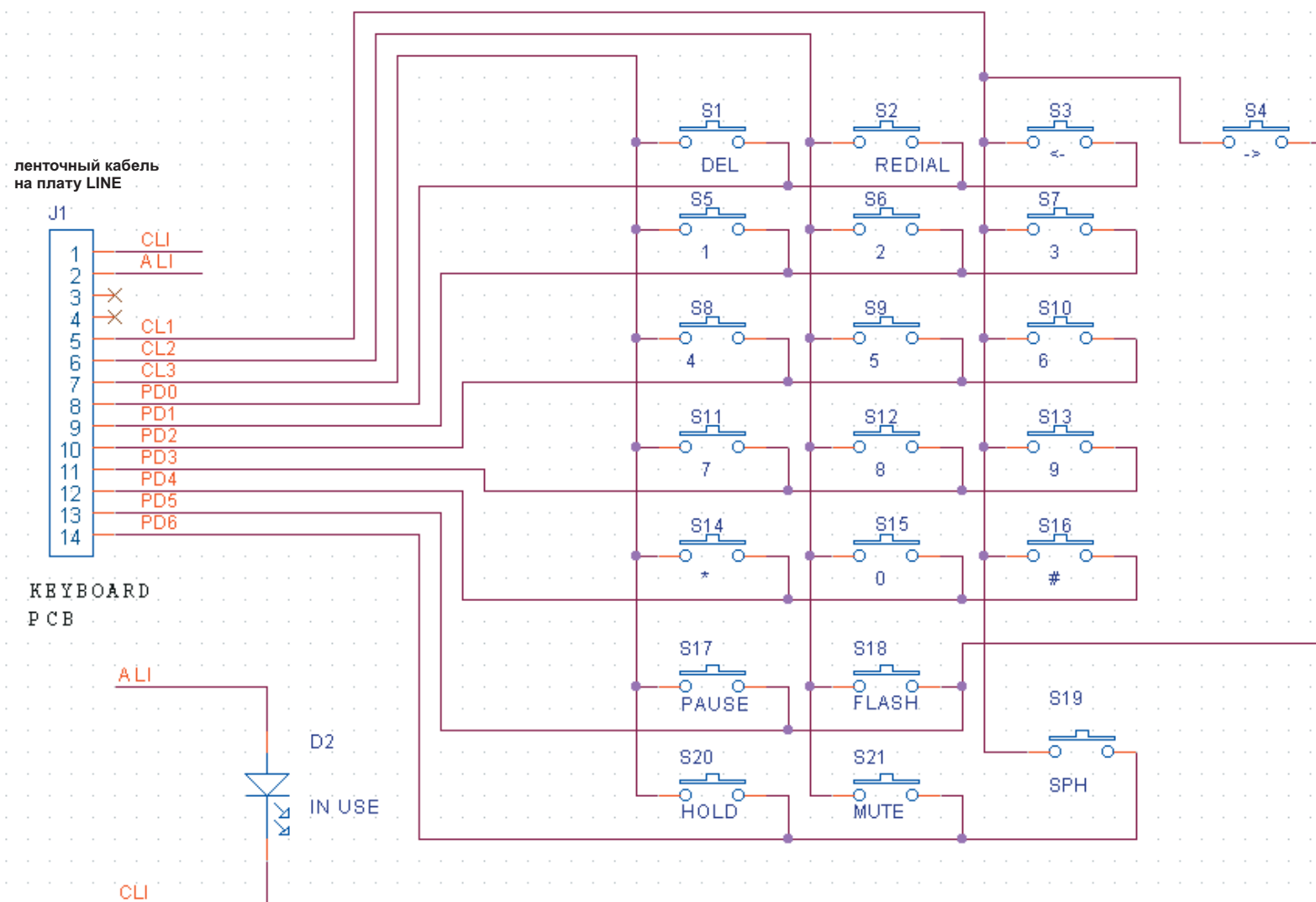
**материалы для сервисных
центров**

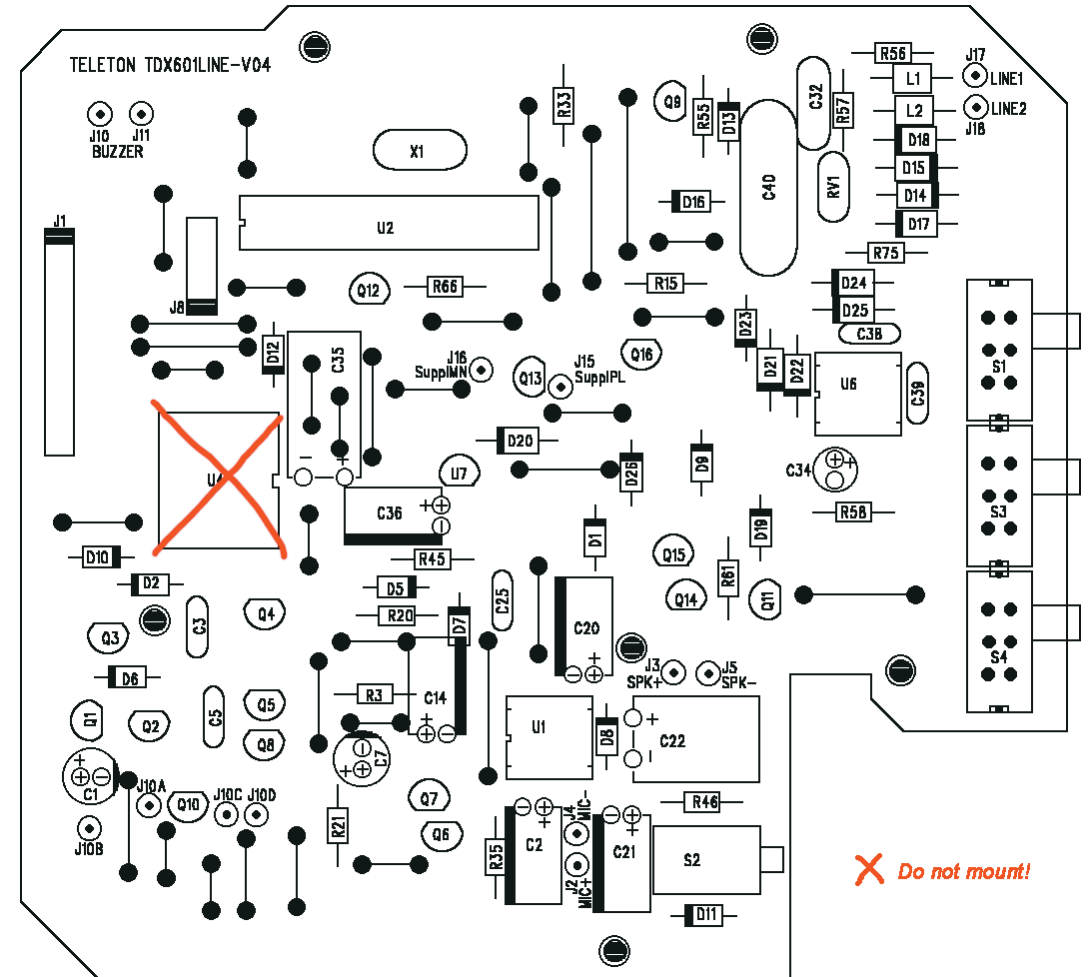
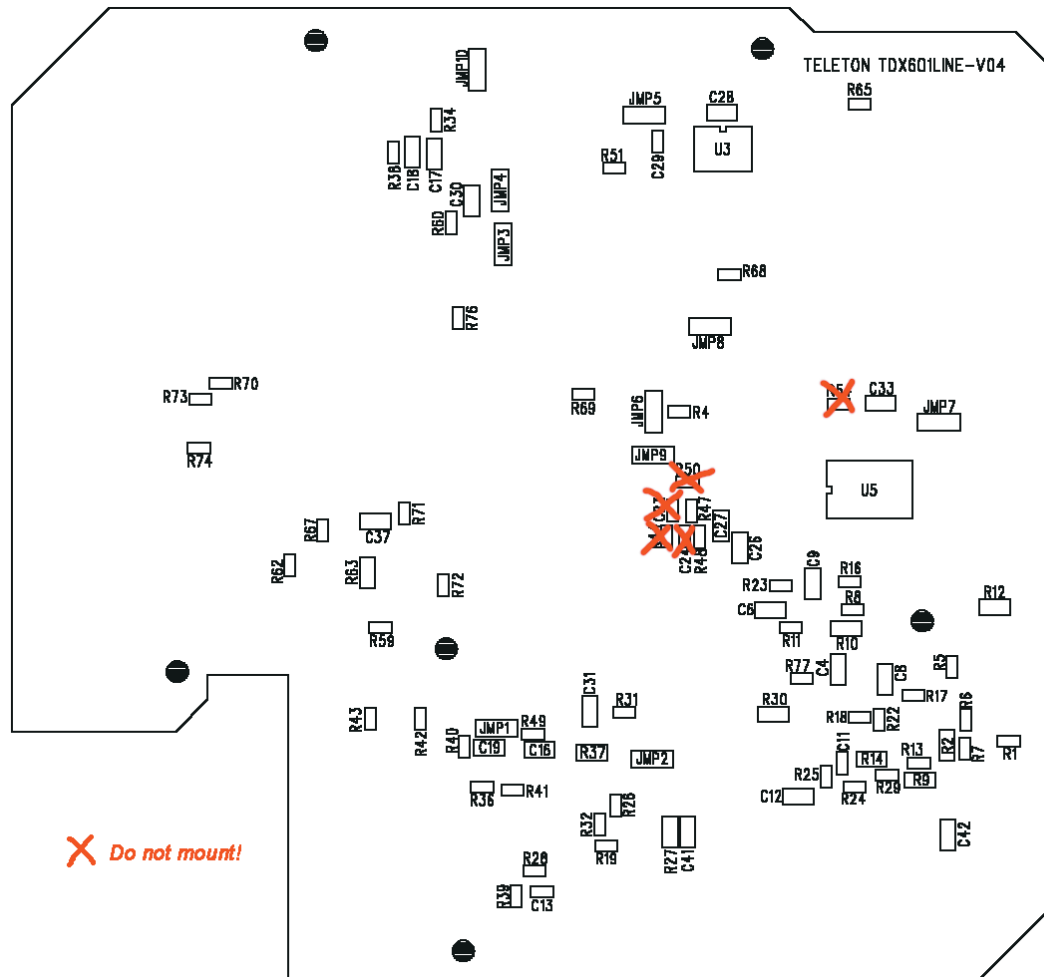


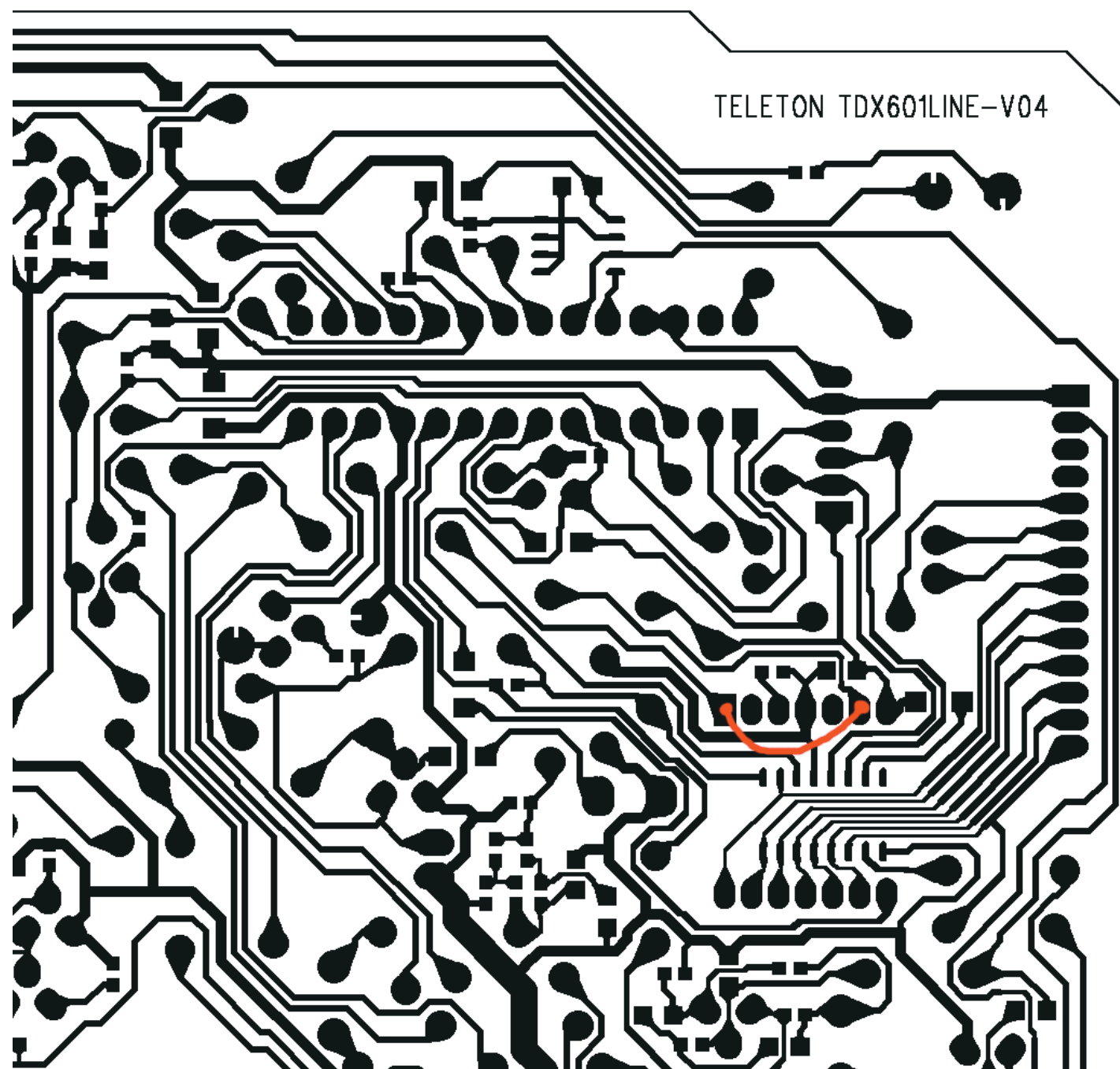




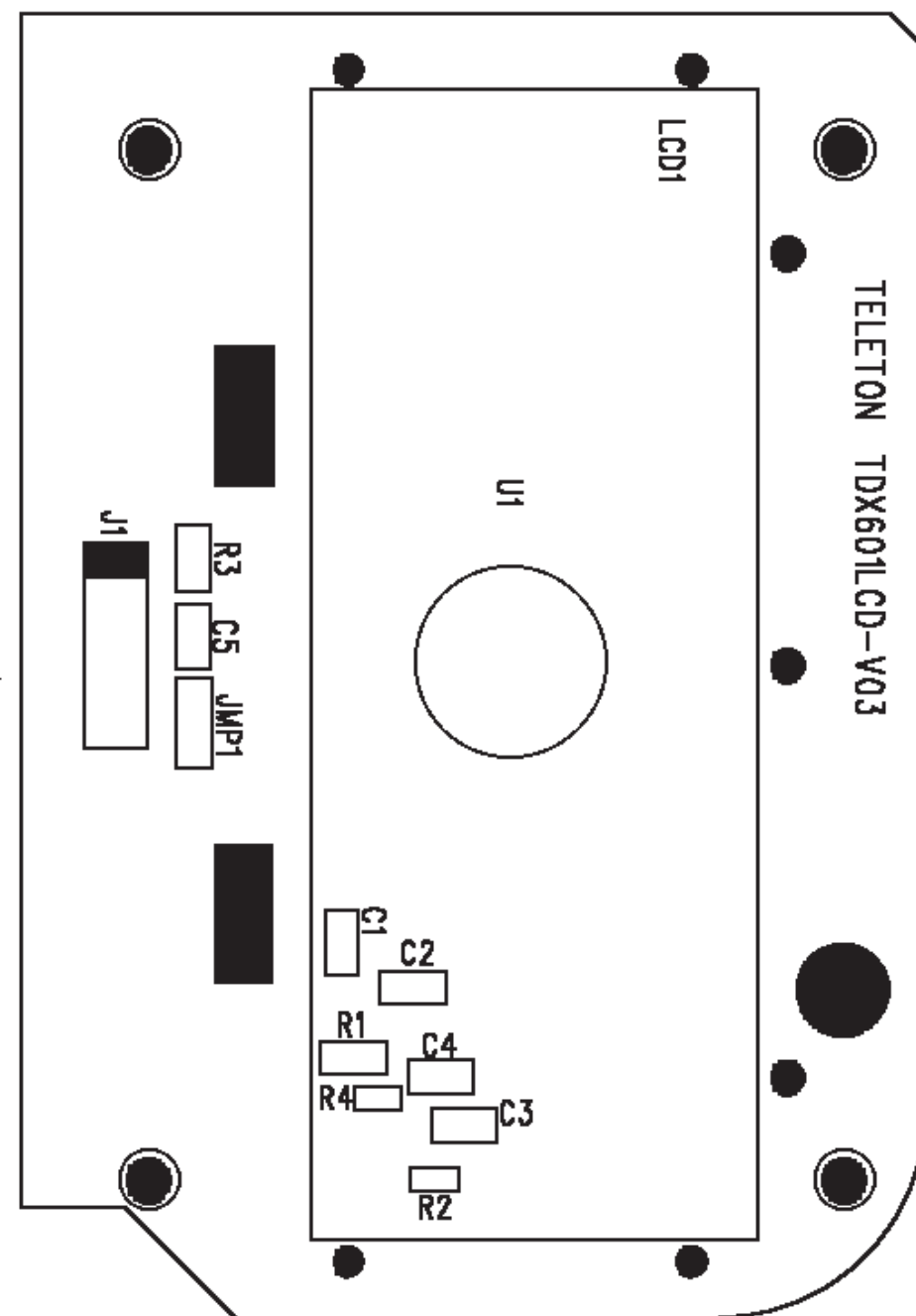
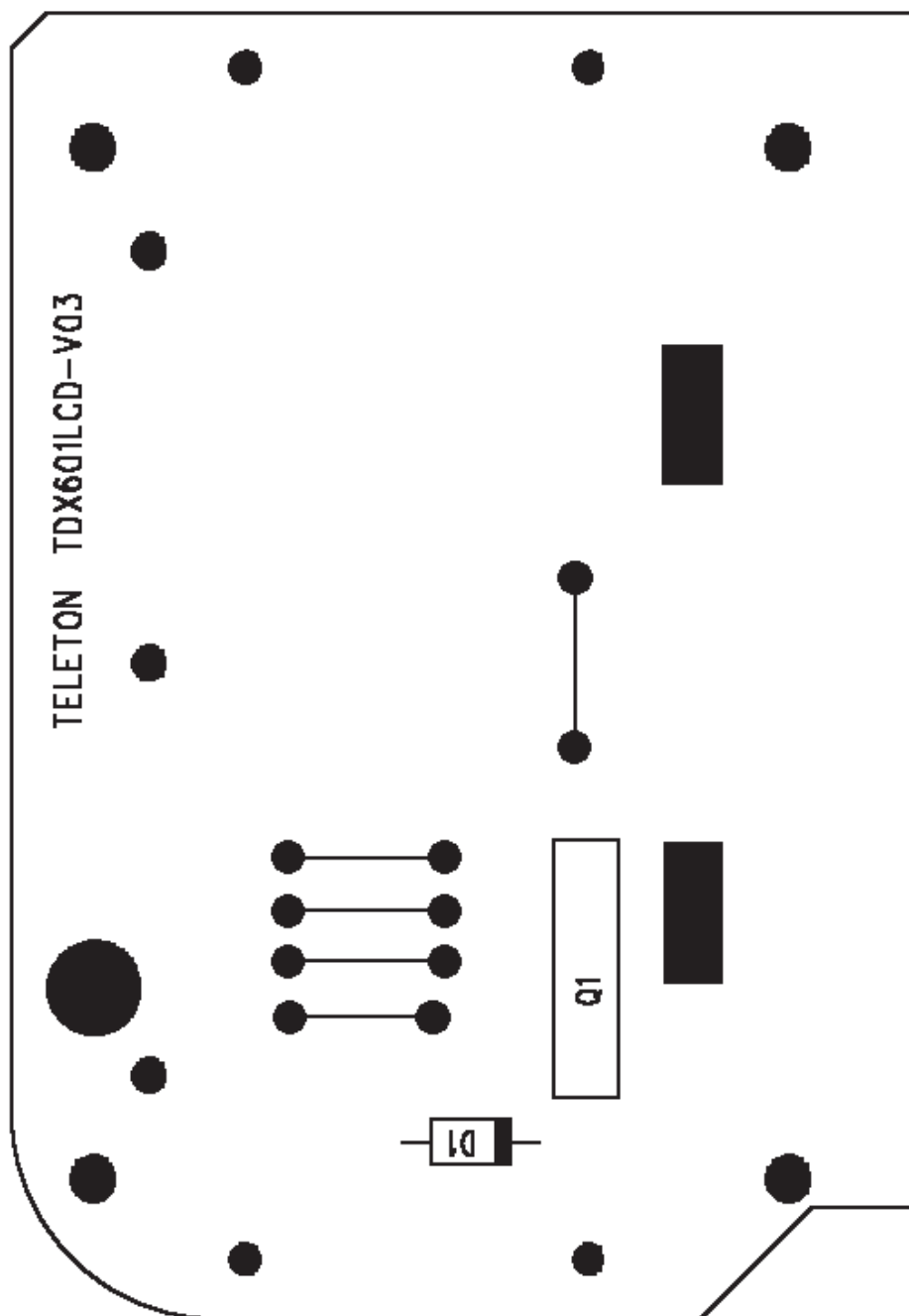


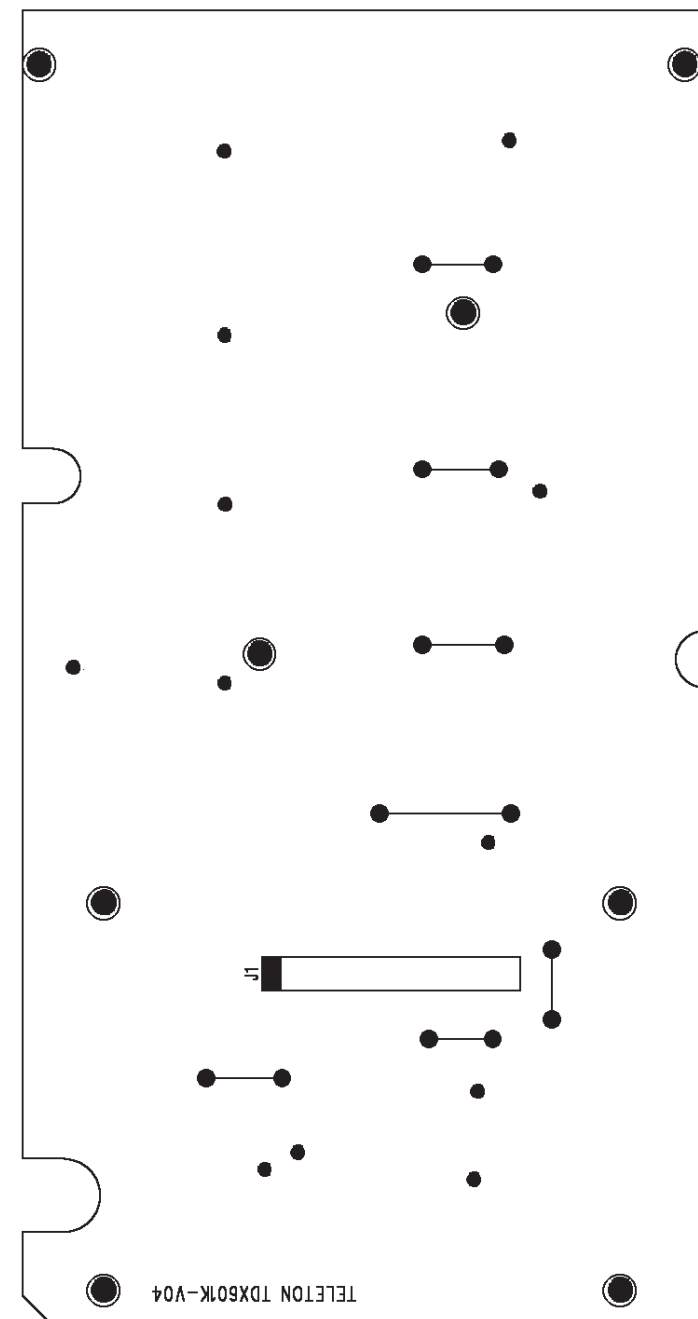
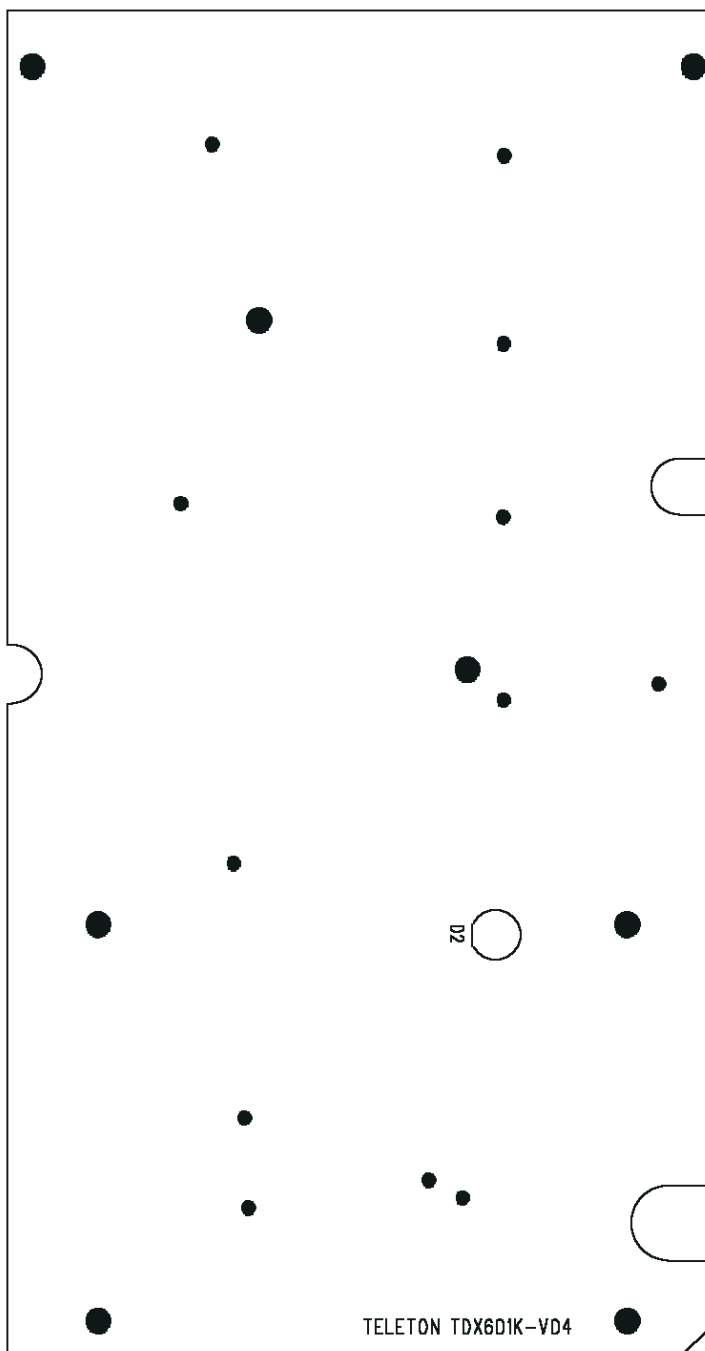




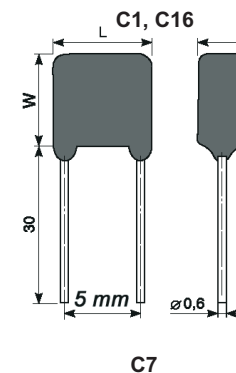


 Place a wire!





{Part}	{Quantity}	{Des}	{Manuf}	{Reference}	{Value}	{PCB Footprint}
PCB LINE	1	Single Layer PCB		TDX601LINE-V04	Size 129.2mm X 120.5mm	
Resistor	1	5%	*	R1	43K	0603
Resistor	4	5%	*	R4,R19,R26,R34	5K1	0603
Resistor	1	5%	*	R5	2K2	0603
Resistor	2	5%	*	R6,R7	16K	0603
Resistor	1	5%	*	R8	510K	0603
Resistor	2	5%	*	R11,R73	30K	0603
Resistor	1	5%	*	R13	360	0603
Resistor	2	5%	*	R41,R16	620K	0603
Resistor	2	5%	*	R17,R43	22	0603
Resistor	2	5%	*	R38,R18	2K	0603
Resistor	1	5%	*	R22	3K3	0603
Resistor	2	5%	*	R23, R50	620	0603
Resistor	5	5%	*	R24,R28,R39,R49,R72	10K	0603
Resistor	1	5%	*	R25	560K	0603
Resistor	4	5%	*	R29,R36,R76,R77	20K	0603
Resistor	1	5%	*	R31	150	0603
Resistor	1	5%	*	R32	300	0603
Resistor	1	5%	*	R40	10	0603
Resistor	1	5%	*	R42	3K	0603
Resistor	1	5%	*	R44	1K5	0603
Resistor	2	5%	*	R48,R47	6K2	0603
Resistor	4	5%	*	R51,R67,R69,R70	100K	0603
Resistor	1	5%	*	R54	240K	0603
Resistor	1	5%	*	R59	220K	0603
Resistor	1	5%	*	R60	150K	0603
Resistor	1	5%	*	R62	56	0603
Resistor	1	5%	*	R65	200	0603
Resistor	1	5%	*	R68	51K	0603
Resistor	1	5%	*	R71	22K	0603
Resistor	1	5%	*	R74	1M5	0603
Resistor	1	5%	*	R2	120K	0805
Resistor	1	5%	*	R9	3K6	0805
Resistor	1	5%	*	R10	30K	0805
Resistor	1	5%	*	R12	24K	0805
Resistor	1	5%	*	R14	150	0805
Resistor	1	5%	*	R27	10K	0805
Resistor	1	5%	*	R30	1K2	0805
Resistor	1	5%	*	R37	43K	0805
Resistor	1	5%	*	R63	220K	0805
Resistor	1	5% 0,125W	*	R3	1K2	DO-35
Resistor	1	5% 0,125W	*	R15	20K	DO-35
Resistor	1	5% 0,125W	*	R20	2K	DO-35
Resistor	3	5% 0,125W	*	R21,R33,R35	5K1	DO-35



{Part}	{Quantity}	{Des}	{Manuf}	{Reference}	{Value}	{PCB Footprint}
Resistor	1	5% 0,125W	*	R45	10K	DO-35
Resistor	1	5% 0,125W	*	R46	10	DO-35
Resistor	1	5% 0,125W	*	R55	390K	DO-35
Resistor	3	5% 0,125W	*	R56,R57,R58	2M	DO-35
Resistor	1	5% 0,125W	*	R61	3M3	DO-35
Resistor	1	5% 0,125W	*	R66	100K	DO-35
Resistor	1	5% 0,125W	*	R75	4K7	DO-35
Jumper	10	SMD	*	JMP1,JMP2,JMP3,JMP4,JMP5,	0	1206
				JMP6,JMP7,JMP8,JMP9,		
				JMP10		
Capacitor	1	16V	*	C11	101	0603
Capacitor	1	16V	*	C13	473	0603
Capacitor	2	16V 10%	*	C24,C25	472	0603
Capacitor	1	16V	*	C29	8p	0603
Capacitor	3	16V	*	C4,C17,C18	103	0805
Capacitor	1	16V 10%	*	C6	332	0805
Capacitor	2	16V	*	C16,C8	683	0805
Capacitor	1	16V 10%	*	C9	152	0805
Capacitor	2	16V	*	C19,C12	473	0805
Capacitor	1	16V 10%	*	C26	472	0805
Capacitor	1	16V 10%	*	C27	103	0805
Capacitor	4	16V	*	C28,C30,C31,C37	104	0805
Capacitor	1	16V	*	C33	104	0805
Capacitor	1	16V	*	C41	332	0805
Capacitor	1	16V	*	C42	101	0805
Capacitor	1	100V	*	C3	333	W=12mm, L=8mm
Capacitor	1	16V	*	C5	224	W=8mm, L=11mm
Capacitor	1	16V	*	C25	333	W=8mm, L=11mm
Capacitor	1	16V 10%	*	C38	682	W=8mm, L=11mm
Capacitor	1	16V 10%	*	C39	393	W=8mm, L=11mm
Capacitor	1	250V	*	C32	104	W=8mm, L=11mm
E. Capacitor	1	50V	*	C34	10uF	K-50
E. Capacitor	1	6V3 20%	*	C1	2.2uF	K-50
E. Capacitor	1	16V	*	C2	1uF	K-50
E. Capacitor	1	6V3 20%	*	C7	220uF	K-50
E. Capacitor	1	16V	*	C14	47uF	K-50
E. Capacitor	1	6V3	*	C20	100uF	K-50
E. Capacitor	1	16V 20%	*	C21	10uF	K-50
E. Capacitor	1	10V	*	C35	2200uF	K-50
E. Capacitor	1	6V3 20%	*	C36	100uF	K-50
E. Capacitor	1	10V	*	C22	1000uF	K-50
Capacitor	1	250V	*	C40	1uF	

{Part}	{Quantity}	{Des}	{Manuf}	{Reference}	{Value}	{PCB Footprint}
Diode	13		*	D1,D2,D5,D6,D7,D9,D10, D11,D12,D13,D16,D19,D26	1N4148	DO-35
Z-Diode	1	Zener 1/4W - BY 1W	*	D8	BZX55C 3V9	DO-35
Diode	8		*	D14,D15,D17,D18,D21,D22, D24,D25	1N4004	DO-41
Diode	1		*	D20	1N4001	DO-41
Z-Diode	1		*	D23	27V	DO-35
Transistor	2	PNP	*	Q1,Q11	MPSA92	TO-92
Transistor	8	NPN	*	Q2,Q6,Q7,Q8,Q9,Q10,Q12, Q15	S9014C Q2 _{hFE} =350-400	TO-92
Transistor	3	NPN	*	Q3,Q5,Q14	MPSA42	TO-92
Transistor	1	Darlington NPN	*	Q4	MPSA13	TO-92
Transistor	2	PNP	*	Q16,Q13	2N3906	TO-92
IC	1	Audio Amp.		U1	LM386N-1	DIP8-300
IC	1	Microcontroller	Holtek	U2	HT46R23	DIP28-300
IC	1	Flash Memory	Holtek	U3	HT24LC16	SOP-8
IC COB	1	Voice syntezaator	Holtek	U4	HT84872COB	DIP14 530 2.8
IC	1	Register	*	U5	74HC595	sop-16-150
IC	1	Ring generator	*	U6	KA2411	DIP8-300
IC	1	Voltage Regulator	Holtek	U7	HT7136A	TO-92
Crystal	1	50 PPM	*	X1	4mHz	
Buzzer	1			B1		
Line Jack	1	RJ Jack 2/6	Weitronic enterprise co.,LTD	J9	Line Jack	RJ62
Phone Jack	1	PCB RJ Jack 4/4	Weitronic enterprise co.,LTD	J10	Handset Jack	
Choke coil	2	EC22-R12K	CTC Coils Ltd.	L2,L1	12uH	DO-35
Microphone	1	-62db	*	MIC1	CZTG-10B	
Varistor	1	270V	*	RV1	270V	диск 8 мм
Speaker	1	25 Ohm	*	SPK1	*	
Sw itch	1	2 position	*	S1	SpeakPh Vol.	SS-12F23
Hooksw itch	1	-	*	S2	PS-22F15	PS-22F15
Sw itch	1	2 position	*	S3	Pulse/Tone	SS-12F23
Sw itch	1	2 position	*	S4	Ring Vol.	SS-12F23

{Part}	{Quantity}	{Des}	{Manuf}	{Reference}	{Value}	{PCB Footprint}
PCB LCD	1	Single Layer		TDX601LCD-V03	Size 76.0mm X 52.6mm	
Resistor	1	5%	*	R1	100K	0805
Resistor	1	5%	*	R2	3M	0603
Resistor	1	5%	*	R3	51K	0805
Resistor	1	5%	*	R4	220K	0603
Jumper	1	SMD	*	JMP1	0	1206
Capacitor	1	16V 10%	*	C1	8pF	0805
Capacitor	4	16V	*	C2,C3,C4,C5	104	0805
Diode	1		*	D1	1N4148	DO-35
Crystal	1	50 PPM	*	Q1	32768Hz	
IC	1	LCD Driver	Holtek	U1	HT1620P	PELLET
LCD Glass	1	STN 4.5 V	Custom Des	LCD1	tdx-601	

{Part}	{Quantity}	{Des}	{Manuf}	{Reference}	{Value}	{PCB Footprint}
PCB KEYBOARD	1	Single Layer		TDX601K-V04	Size 142.5mm X 74.5mm	
LED	1	Red, standart intensity	*	D2	IN USE	LED

ДИСПЛЕЙ

